



Stevia Extract





- English Name: Stevia Extract
- Latin Name: Stevia rebaudiana
- Extract Part : Leaf
- Molecular Formula: C₄₄H₇₀O₂₃
(Rebaudioside A)
- Molecular Weight: 967.01
(Rebaudioside A)
- Active ingredient: Rebaudioside A,
Steviol Glycosides
- Specification: 80~98% Steviol
Glycosides, 40~98% Reb-A
- Appearance: White Fine powder
- Test method: HPLC
- Identification:TLC
- Solubility: Good in hydro-alcoholic
solution
- Extract Method:Grain alcohol / Water
- Brand Name:Hunan Nutramax Inc.





Series No	Product	Specification	Total stevioside	RA	Stevioside
1	RA series	Stevia A3-99%	99%	99%	
		Stevia A3-98%	99%	98%	
2		Stevia A3-95%	99%	95%	3%
3		Stevia A3-90%	95%	90%	5%
4		Stevia A3-85%	95%	85%	
5		Stevia A3-80%	95%	80%	9%
6		Stevia A3-60%	90%	60%	STV26,RC4.5%
		Stevia A3-60%	95%	60%	STV31,RC4%
7		Stevia A3-50%	90%	53%	STV33,RC5%
8		Stevia A3-40%	85%	40%	STV40,RC5%
9	DebitterizingSTV	Stevia 95%	98%	3%	95%
10		Stevia 90%	95%	6%	90%
	11	Stevia	95%	95%	1%
Stevia 90%%			90%	20%	56%,RC5%%
Stevia 85%%			85%		
14		Stevia 80%	80%	20%	50%-52%RC8%
15	Steviocin		95%		
16	Enzyme modification		Enzyme modification		





What is Stevia Extract produced in Hunan NutraMax Inc ?

- Stevia rebaudiana (Bertoni) is a South American plant native to Paraguay that traditionally has been used to sweeten beverages and make tea.
- The word “stevia” refers to the entire plant and its components, only some of which are sweet.
- The sweet tasting components of the stevia plant are called steviol glycosides. Steviol glycosides can be isolated and purified from the leaves of the stevia plant and are now added to some foods, beverages and tabletop sweeteners in the U.S. and elsewhere.





Where will NutraMax' s Stevia Extract used to ?

- Low Calorie Food, Beverage, Chocolate etc
- Health toothpaste, mouthwash, chewing gum
- Used in beverages and foods such as desserts, sauces, yogurt, pickled foods, breads and confections.
- Weight Control and a Healthful Lifestyle





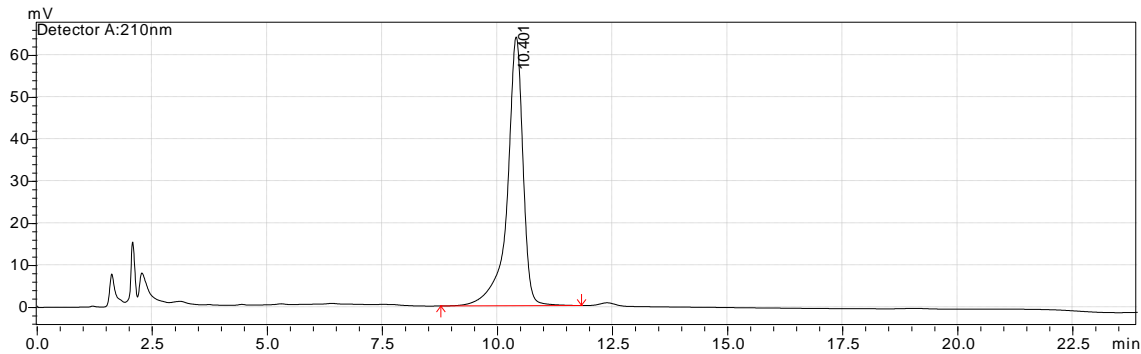
Application of NutraMax 's Stevia Extract ?

- Natural sweetener with low Calories
- Resisting Carious teeth
- Extend shelf-life by inhibit growth of bacteria
- Suitable for Type II Diabet Diabetes
- Prevents Tooth Decay





- Test Chromatogram of Stevia Extract



TESTED BY THE THIRD LAB: NSF



NSF International

NSF (Shanghai) Testing Technology Co., Ltd.
Unit D/F, 1 Floor, Building 10, 1188 Lianhang Road,
Minhang District, Shanghai, China
Tel: +86.21.2428.6300 | Fax: +21.2428.6299
www.nsfchina.com

TEST REPORT

测试报告





Hunan NutraMax Inc.

Add: F25,Jiahe Blog,#217 Wanjiali Road ,Changsha , China ,410016

Tel: +86-731-82939-655/656/657/658/659/660/661/676

Fax: +86-731-82938822

Email: sales@nutra-max.com

Http: // www.nutra-max.com

