



Green Tea Extract





- English Name: Green Tea Extract
- Latin Name: Camellia Sinensis O. Ktze.
- Extract Part : Leaf
- Active ingredient: L-Theanine,
- Catechins,Catechins,EGCG,Polyphenols
- Appearance: Brown to White Fine powder
- Test method: HPLC/UV-VIS
- Identification:TLC
- Molecular Formula: C₂₂H₁₈O₁₁ (EGCG)
- Molecular Weight: 458.3717 (EGCG)
- Solubility: Partly in Water
- Method: Ethanol&Water
- Brand Name:Hunan Nutramax Inc.





Type	Tea Polyphenols(%)	Catechins(%)	EGCG (%)	Caffeine
TP30	≥30	≥15	≥6	0.5-10≤=0.3
TP40	≥40	≥20	≥8	0.5-10≤=0.3
TP50	≥50	≥30	≥15	0.5-10≤=0.3
TP60	≥60	≥40	≥20	0.5-10≤=0.3
TP70	≥70	≥45	≥22	0.5-10≤=0.3
TP80	≥80	≥60	≥30	0.5-15≤=0.3
TP90	≥90	≥65	≥35	0.5-10≤=0.3
TP95	≥95	≥70	≥40	0.5-6≤=0.3
		≥75	≥45	
		≥75	≥45	0.5-3≤=0.3
TP98	≥98	≥80	≥50	0.5-3≤=0.3
		≥85	≥60	0.5-3≤=0.1
		≥90	≥70	0.5-1
Certification	By UV	By HPLC	By HPLC	By HPLC





What is Green Tea Extract produced in Hunan NutraMax Inc ?

- Green tea extract is a bioflavonoid rich, potent extract used primarily for fighting free radicals.
- It contains a high content of polyphenols, which are a class of bioflavonoids. Green tea extract contains a potent antioxidant, EGCG, which is over 200 times more powerful than vitamin E in neutralizing the pro-oxidants and free radicals that attack lipids in the brain.
- This important ingredient, Epigallocatechin Gallate (EGCG), protects against digestive and respiratory infections, helps to block the cancer promoting actions of carcinogens, protects against high total and LDL cholesterol levels, and blocks the attachment of the bacteria associated with dental cavities to the teeth.





Where will NutraMax' s Green Tea Extract used for ?

- Preventing the oxidation of lipidic foods and prolonging the shelf life.
- Restraining bacterium widely and intensively.
- Restraining the production of nitrite in bloat-meat food.
- Restraining the decomposition and destroy of food pigment, Vitamin and carrot element.
- Preventing candy from oxidation and acidification, protecting teeth from decaying and clearing away peculiar smell in mouth.
- Preventing aquatic products from growth of bacterium, getting brown and getting rid of peculiar smell.





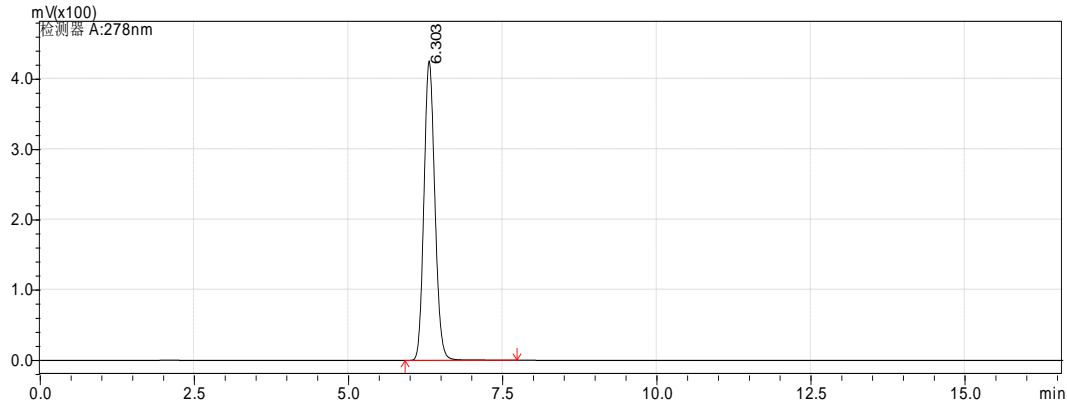
Application of NutraMax ' s Green Tea Extract ?

- Natural sweetener with low Calories
- Resisting Carious teeth
- Anti-oxidant
- Anti-cancer
- Weight Loss
- Extend shelf-life by inhibit growth of bacteria
- Suitable for Type II Diabet Diabetes
- Enhancing Immune Function





- **Test Chromatogram of Green Tea Extract**



TESTED BY THE THIRD LAB:NSF



NSF International

NSF (Shanghai) Testing Technology Co., Ltd.
Unit D/F, 1 Floor, Building 10, 1188 Lianhang Road,
Minhang District, Shanghai, China
Tel: +86.21.2428.6300 | Fax: +21.2428.6299
www.nsfchina.com

TEST REPORT

测试报告





Hunan NutraMax Inc.

Add: F25,Jiahe Blog,#217 Wanjiali Road ,Changsha , China ,410016

Tel: +86-731-82939-655/656/657/658/659/660/661/676

Fax: +86-731-82938822

Email: sales@nutra-max.com

Http: // www.nutra-max.com

